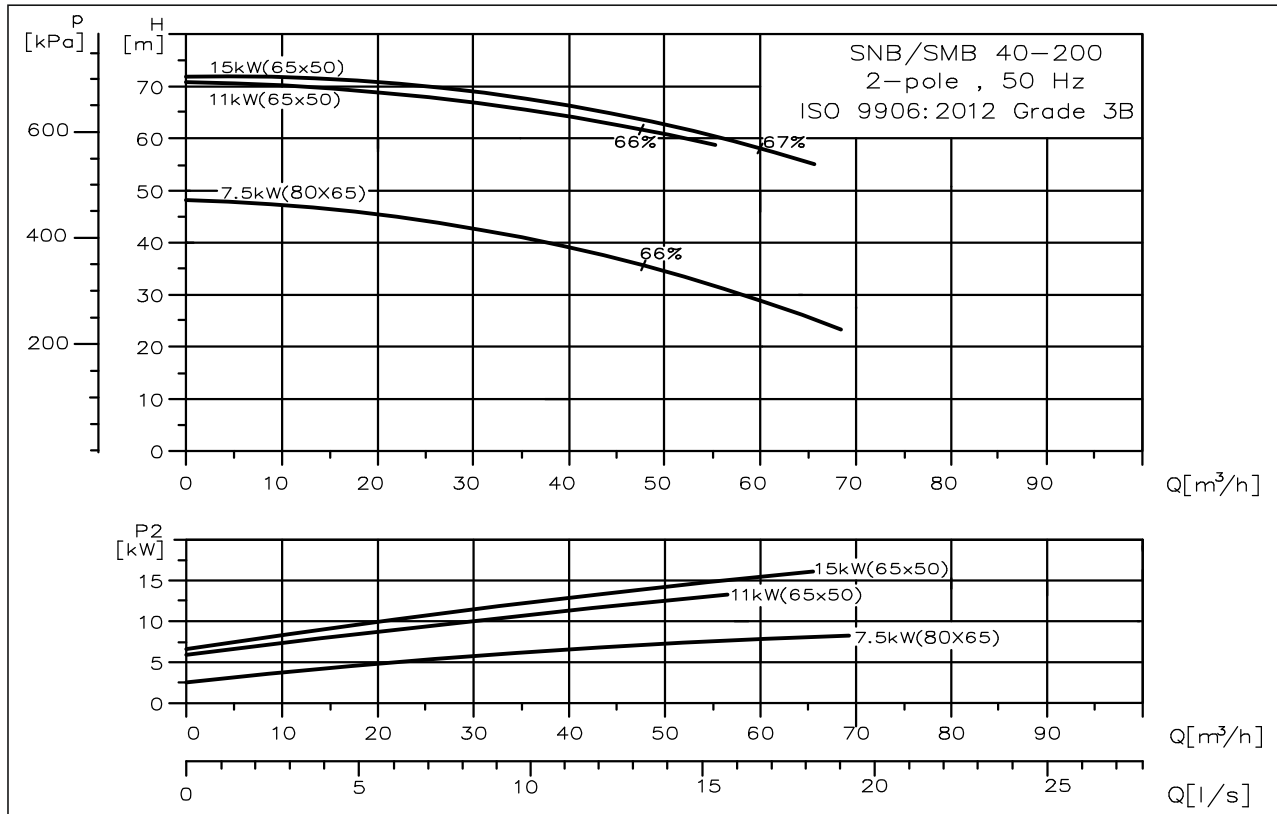


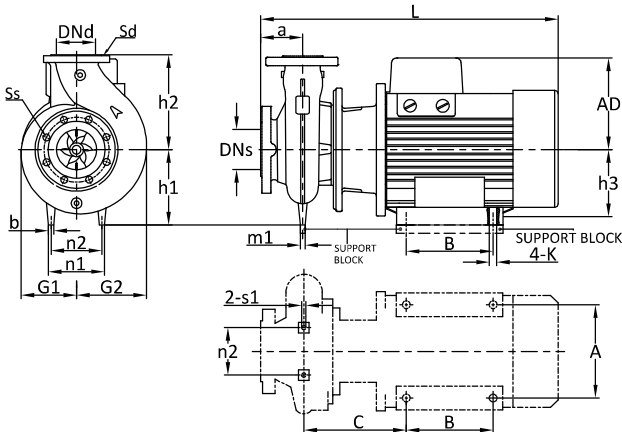
# PERFORMANCE CURVE

## SNB/SMB SS 40-200 (2 POLE)

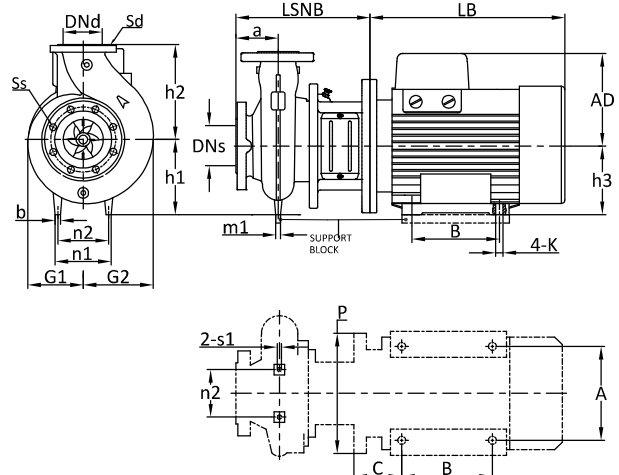


[kW / HP]	Suc. x Del.	Material Code
7.5 / 10.0	: 80 x 65 mm	9000019127 (SMB)
11.0 / 15.0	: 65 x 50 mm	9000019132 (SMB)
15.0 / 20.0	: 65 x 50 mm	9000018823 (SMB)
15.0 / 20.0	: 65 x 50 mm	9000016473 (SNB)

### SMB SS



### SNB SS



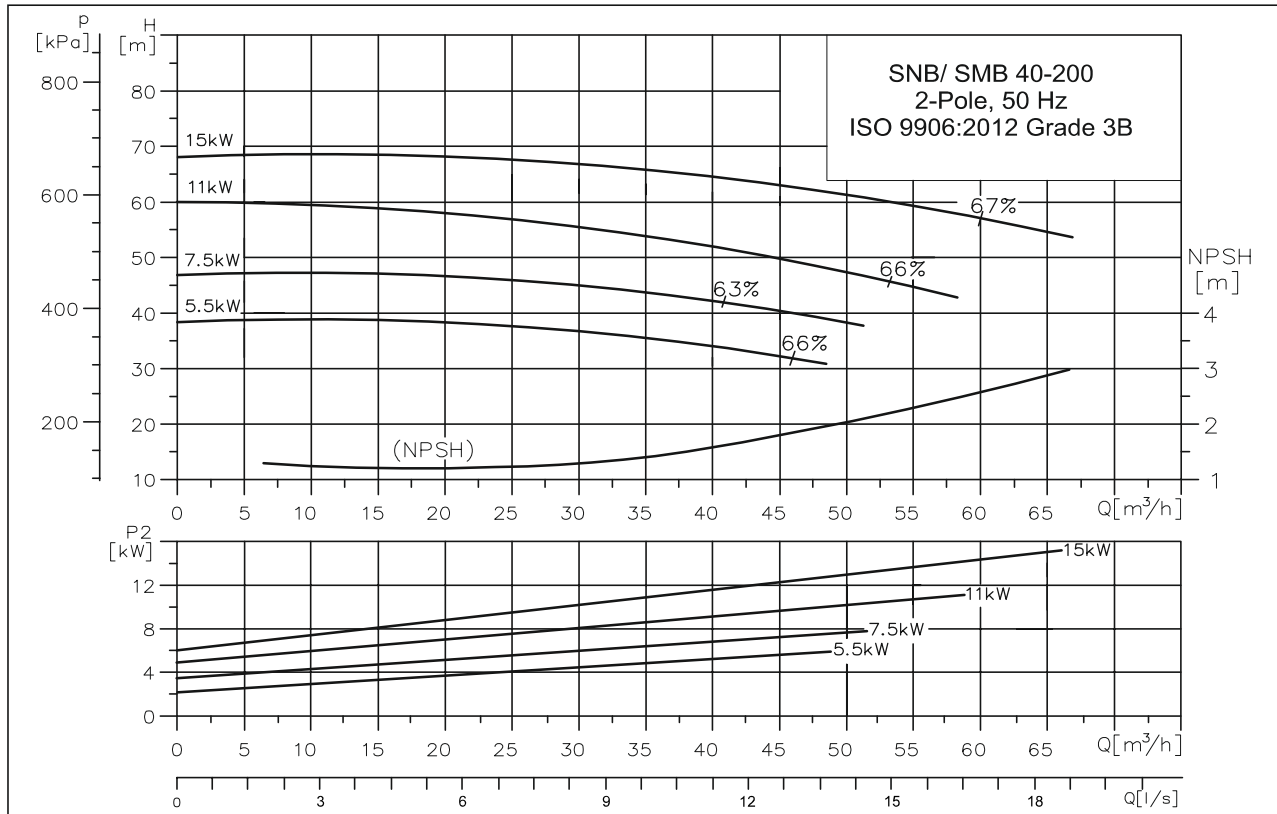
## PERFORMANCE TABLE

### SNB/SMB SS 40-200 (2 POLE)

Pump type			40-200		
Motor type	HIGH EFF. MOTOR		SMG 132	SMG 160	SMG 160
COMMON DATA SNB/SMB SS	P <sub>2</sub>	[kW/HP]	7.5/10	11/15	15/20
	PN	[bar]	16	16	16
	DNs	[mm]	65	65	65
	DNd	[mm]	40	40	40
	a	[mm]	100	100	100
	h <sub>2</sub>	[mm]	180	180	180
	h <sub>1</sub>	[mm]	160	160	160
	Ss		4x Slot(19x22)	4x Slot(19x22)	4x Slot(19x22)
	Sd		4x Slot(19x25)	4x Slot(19x25)	4x Slot(19x25)
	G1	[mm]	141	141	141
	G2	[mm]	155	155	155
	m1	[mm]	18	18	18
	m2	[mm]	-	-	-
	n1	[mm]	116	116	116
	n2	[mm]	98	98	98
	b	[mm]	18	18	18
	s1	[mm]	M8	M8	M8
SNB SS DATA	AD	[mm]	-	-	233
	h <sub>3</sub>	[mm]	-	-	160
	A	[mm]	-	-	254
	B	[mm]	-	-	254
	K	[mm]	-	-	M12
	L SNB	[mm]	-	-	341
	LB	[mm]	-	-	565
	C	[mm]	-	-	108
	P	[mm]	-	-	350
NET WT. (APX.)	[kg]	-	-	169	
SMB SS DATA	AD	[mm]	138	199	233
	h <sub>3</sub>	[mm]	160	170	160
	A	[mm]	195	232	254
	B	[mm]	120	310	254
	K	[mm]	M12	M16	M12
	L	[mm]	588	690	742
	C	[mm]	215	138	188
	NET WT. (APX.)	[kg]	66	129	160

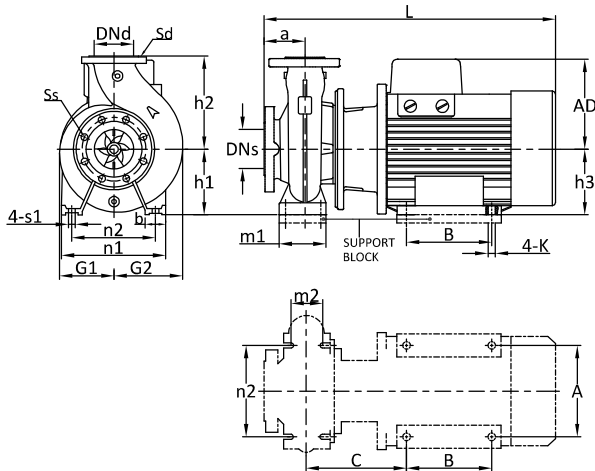
# PERFORMANCE CURVE

## SNB/SMB CI 40-200 (2 POLE)

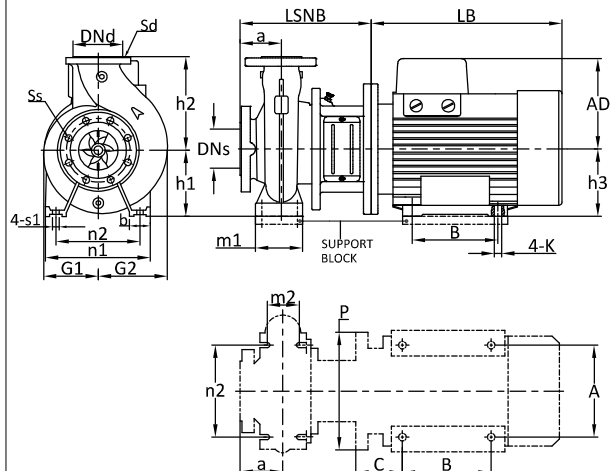


[kW / HP]	Suc. x Del.	Material Code
5.5 / 7.5	: 65 x 50 mm	9000014211 (SNB), 9000023015 (SMB)
7.5 / 10.0	: 65 x 50 mm	9000014212 (SNB), 9000019380 (SMB)
11.0 / 15.0	: 65 x 50 mm	9000019977 (SNB), 9000019386 (SMB)
15.0 / 20.0	: 65 x 50 mm	9000019105 (SNB), 9000019393 (SMB)

SMB CI



SNB CI



## PERFORMANCE TABLE

### SNB/SMB CI 40-200 (2 POLE)

Pump type			40-200			
Motor type	HIGH EFF. MOTOR		SMG 132	SMG 132	SMG 160	SMG 160
COMMON DATA SNB/SMB CI	P <sub>2</sub>	[kW/HP]	5.5/7.5	7.5/10	11/15	15/20
	PN	[bar]	16	16	16	16
	DNs	[mm]	65	65	65	65
	DNd	[mm]	40	40	40	40
	a	[mm]	100	100	100	100
	h <sub>2</sub>	[mm]	180	180	180	180
	h <sub>1</sub>	[mm]	160	160	160	160
	Ss		4x19	4x19	4x19	4x19
	Sd		4x19	4x19	4x19	4x19
	G1	[mm]	143	143	143	143
	G2	[mm]	157	157	157	157
	m1	[mm]	100	100	100	100
	m2	[mm]	70	70	70	70
	n1	[mm]	265	265	265	265
	n2	[mm]	212	212	212	212
	SNB CI DATA	b	[mm]	50	50	50
s1		[mm]	M12	M12	M12	M12
AD		[mm]	138	138	233	233
h3		[mm]	160	160	160	160
A		[mm]	195	195	254	254
B		[mm]	120	120	254	254
K		[mm]	M12	M12	M12	M12
L SNB		[mm]	311	311	341	341
LB		[mm]	410	410	565	565
C		[mm]	136	136	108	108
SMB CI DATA	P	[mm]	300	300	350	350
	NET WT. (APX.)	[kg]	92	97	162	169
	AD	[mm]	138	138	199	233
	h3	[mm]	160	160	170	160
	A	[mm]	195	195	232	254
	B	[mm]	120	120	310	254
	K	[mm]	M12	M12	M16	M12
	L	[mm]	588	588	690	742
C	[mm]	215	215	138	188	
NET WT. (APX.)	[kg]	66	66	129	160	